



NELAZA
PROPERTIES LIMITED




ARADIPPOU LARNACA
FC 60

“

WHERE COMFORT
MEETS CONVENIENCE

”



- **3 Floors Residential Building**
- **18 Apartments**
- **1 Bedroom, 2 Bedrooms, 3 Bedrooms**
- **Comfortable Location**
- **Budget Value Project**
- **Aradippou, Larnaca (Google Map FC 60)** 

Surroundings

Easy access to Larnaca International Airport, beaches & nightlife.

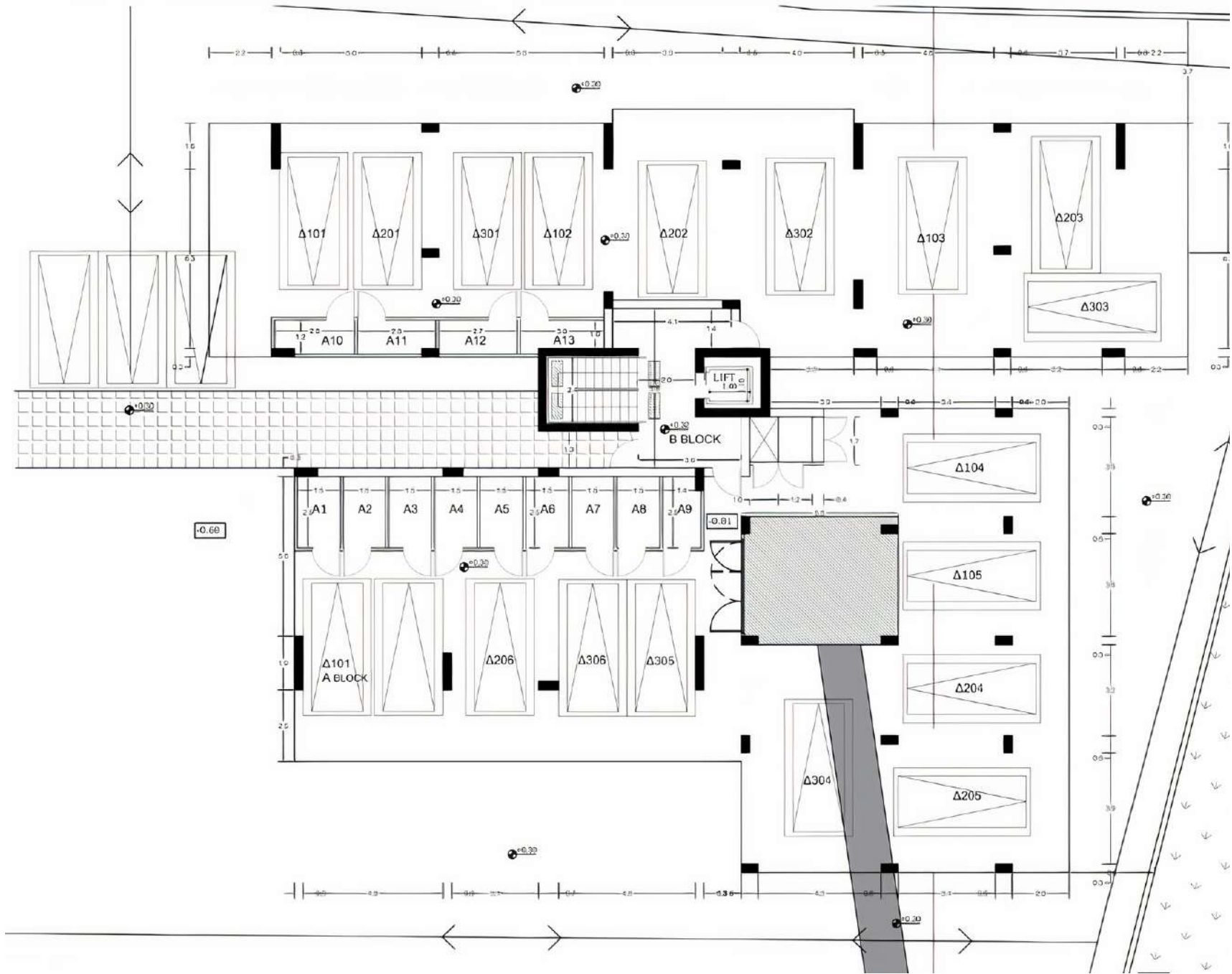
**BOOK YOUR MINUS 1 MONTH
PRE SALE PRICE**



LATHEA COURT 3
FLOOR PLANS



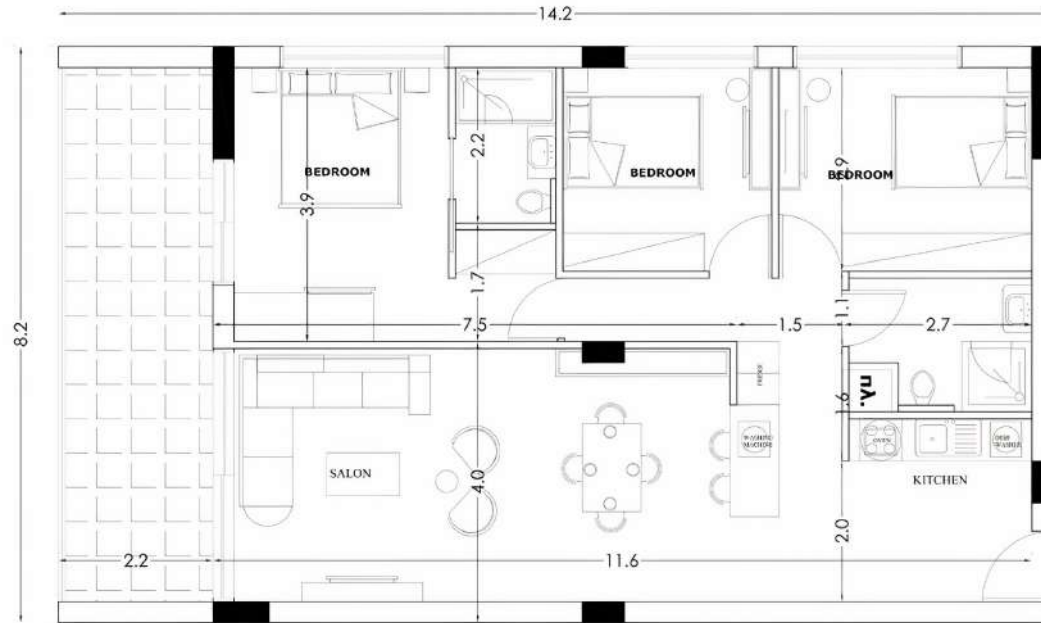
◀ FLOOR PLAN



◀ PARKING PLAN

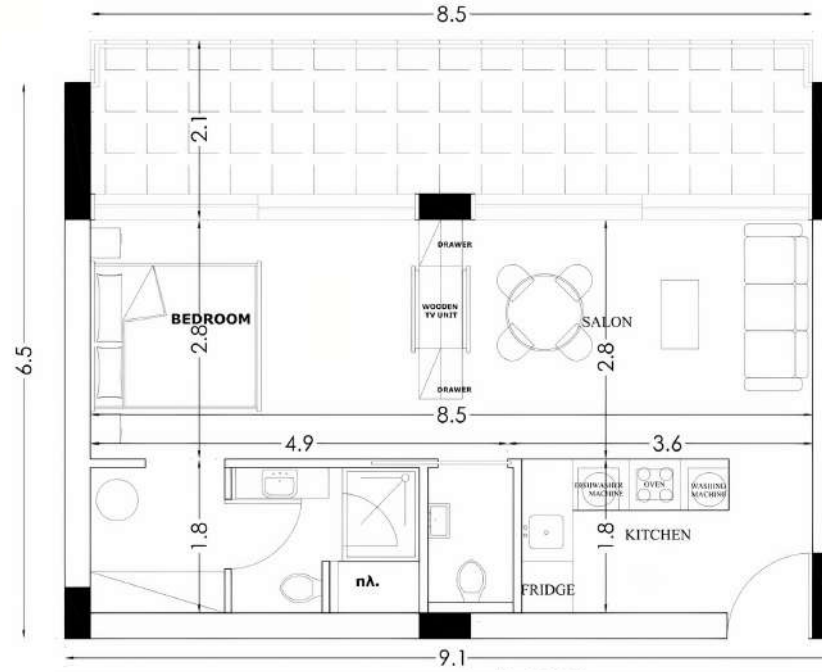
FIRST FLOOR

101 - 120 m²



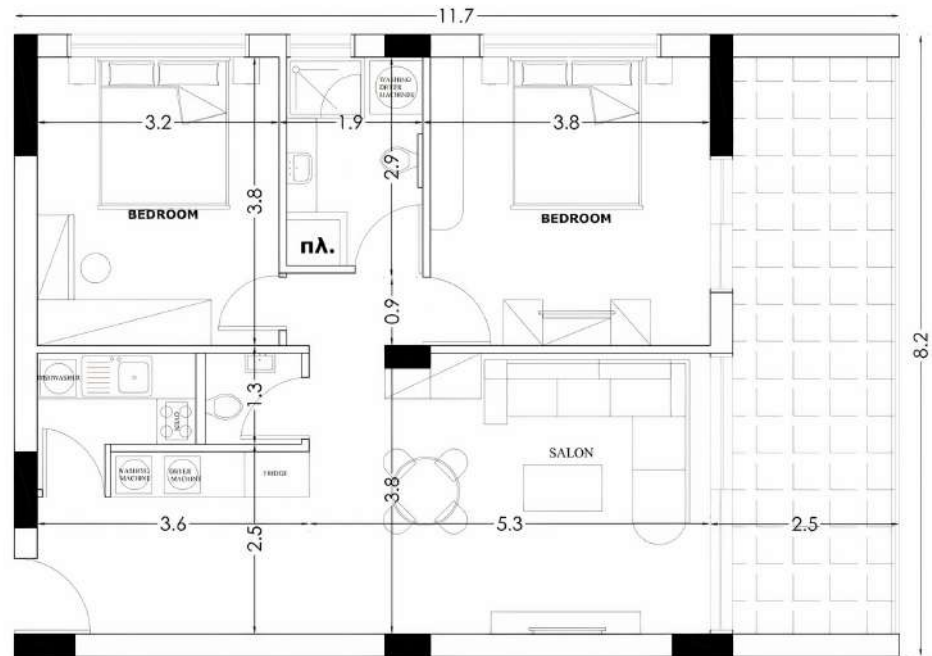
FIRST FLOOR

102 - 63 m²



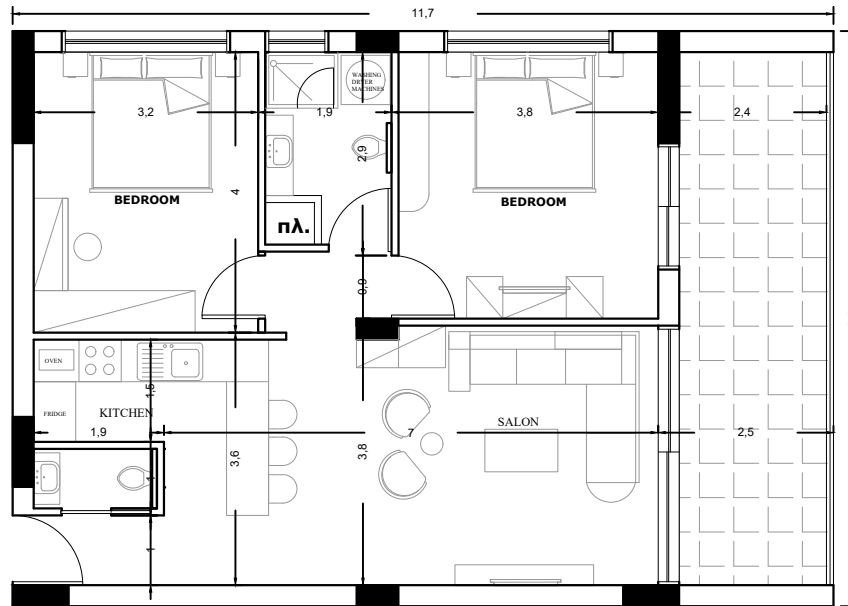
FIRST FLOOR

103 - 98 m²



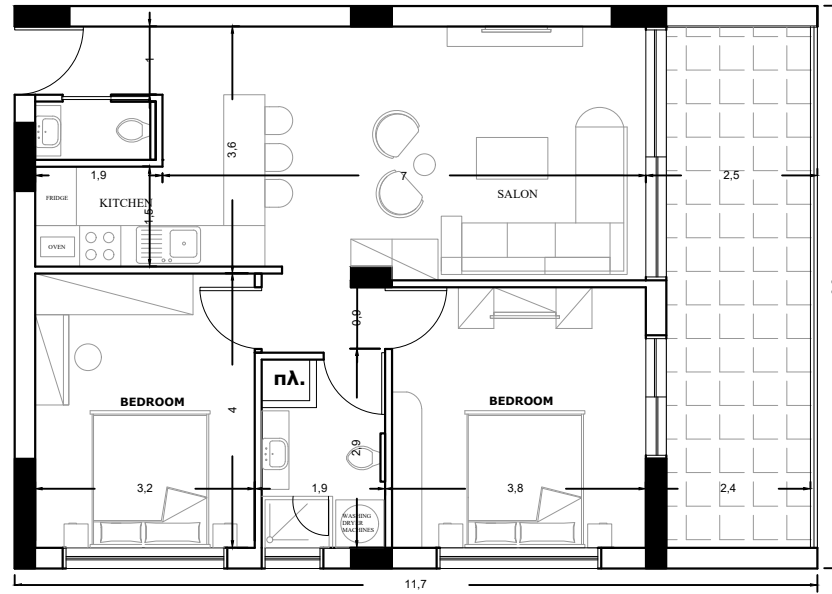
FIRST FLOOR

104 - 98 m²



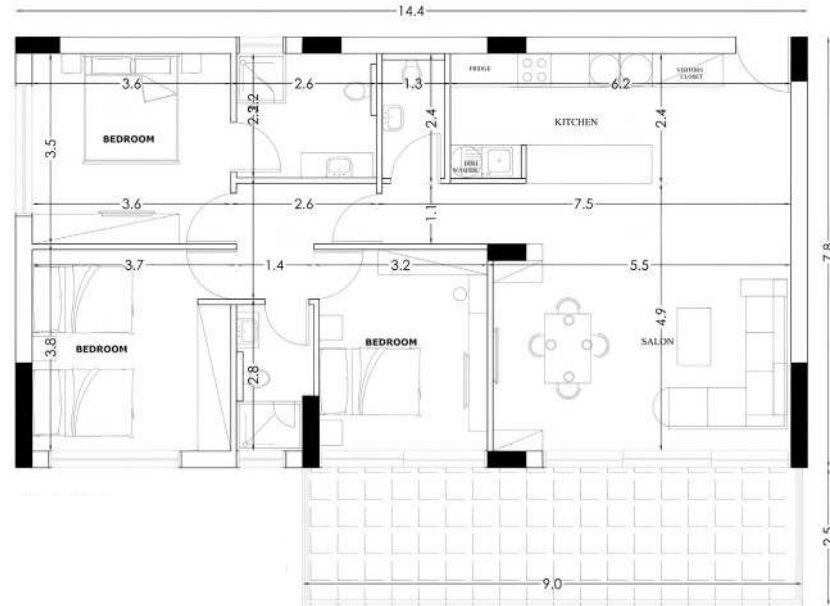
FIRST FLOOR

105 - 98 m²



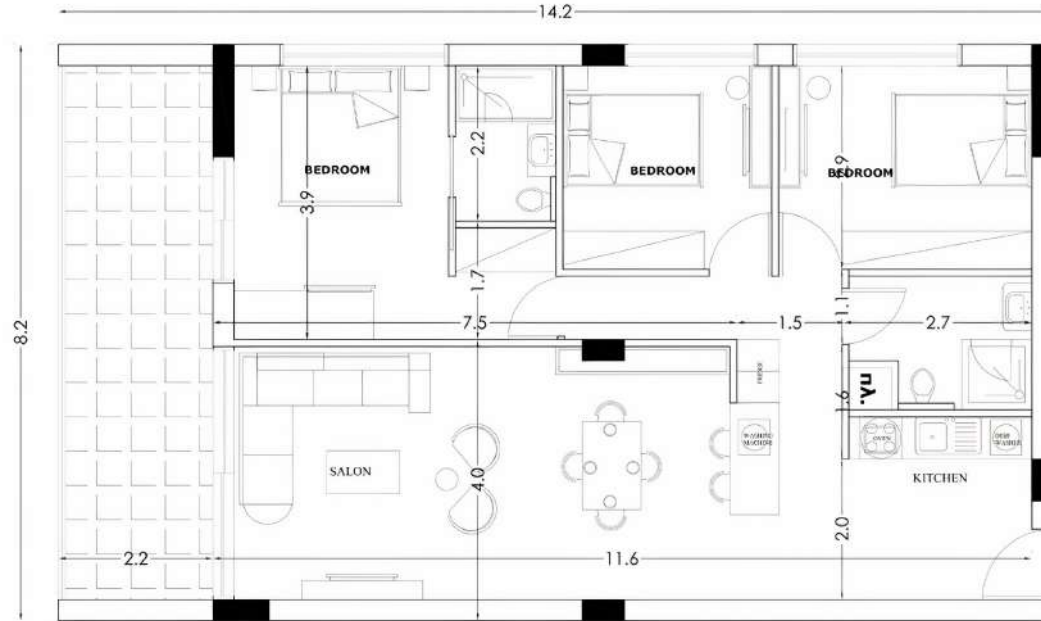
FIRST FLOOR

106 - 145 m²



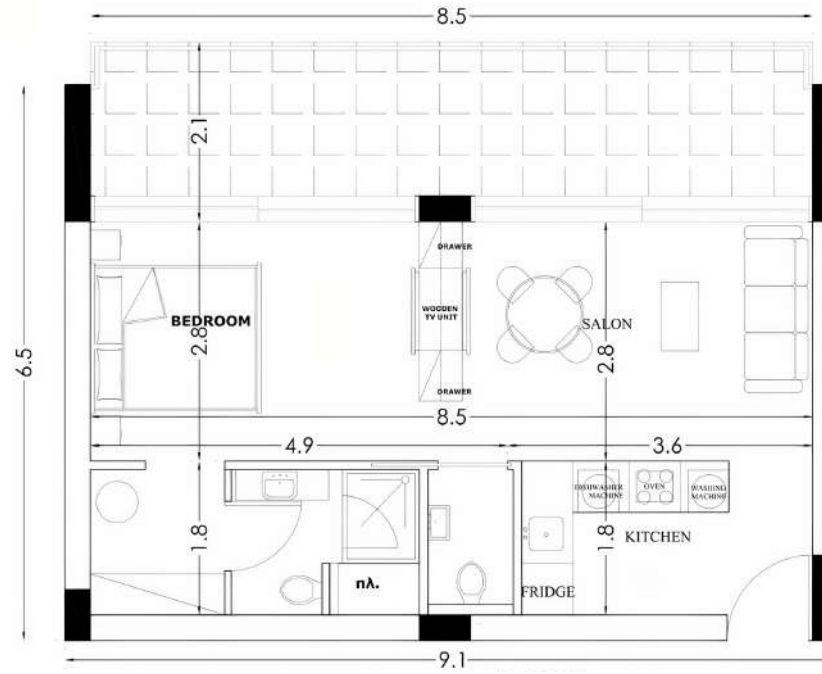
SECOND FLOOR

201 - 120 m²



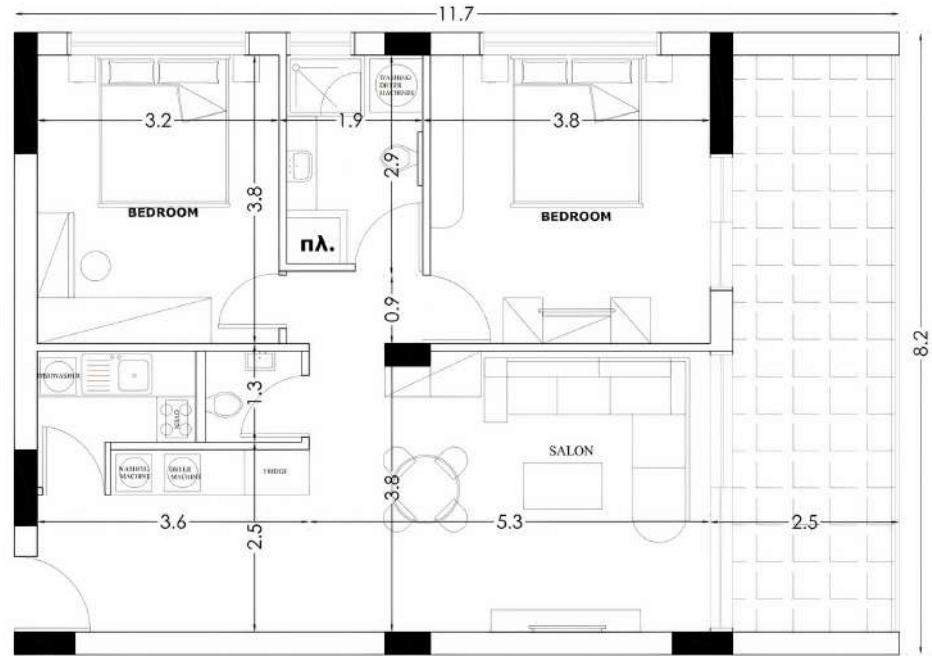
SECOND FLOOR

202 - 63 m²



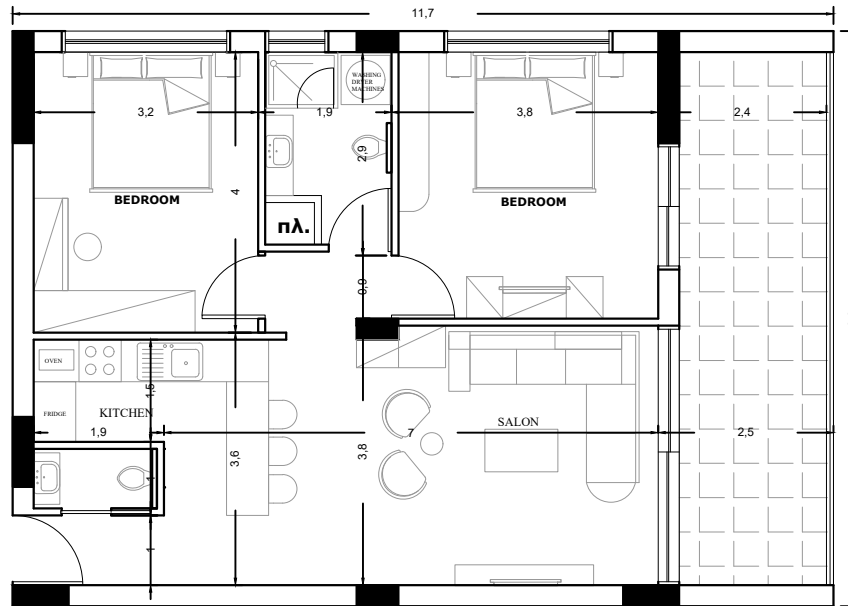
SECOND FLOOR

203 - 98 m²



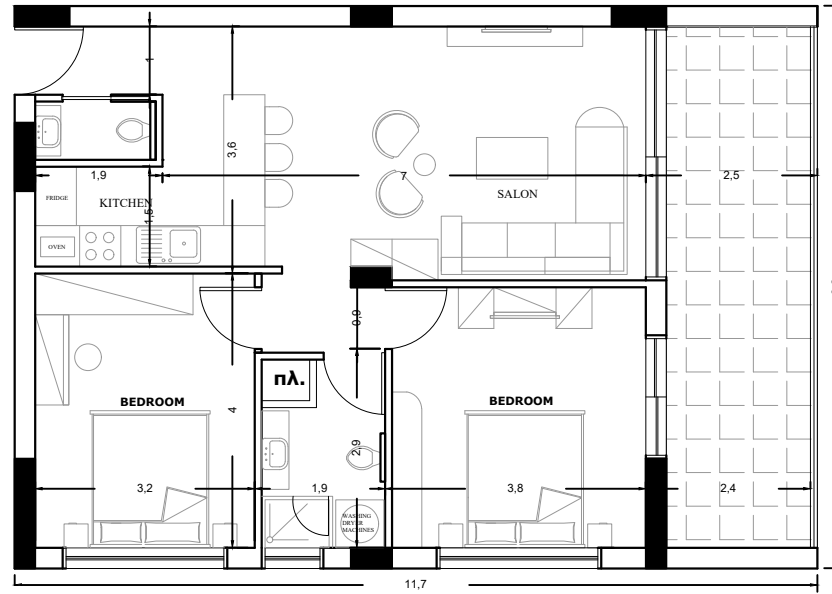
SECOND FLOOR

204 - 98 m²



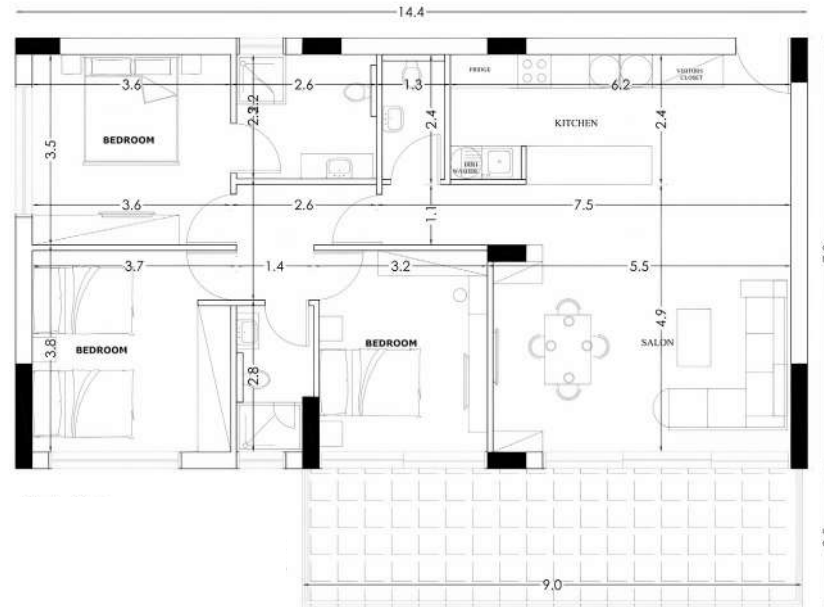
SECOND FLOOR

205 - 98 m²



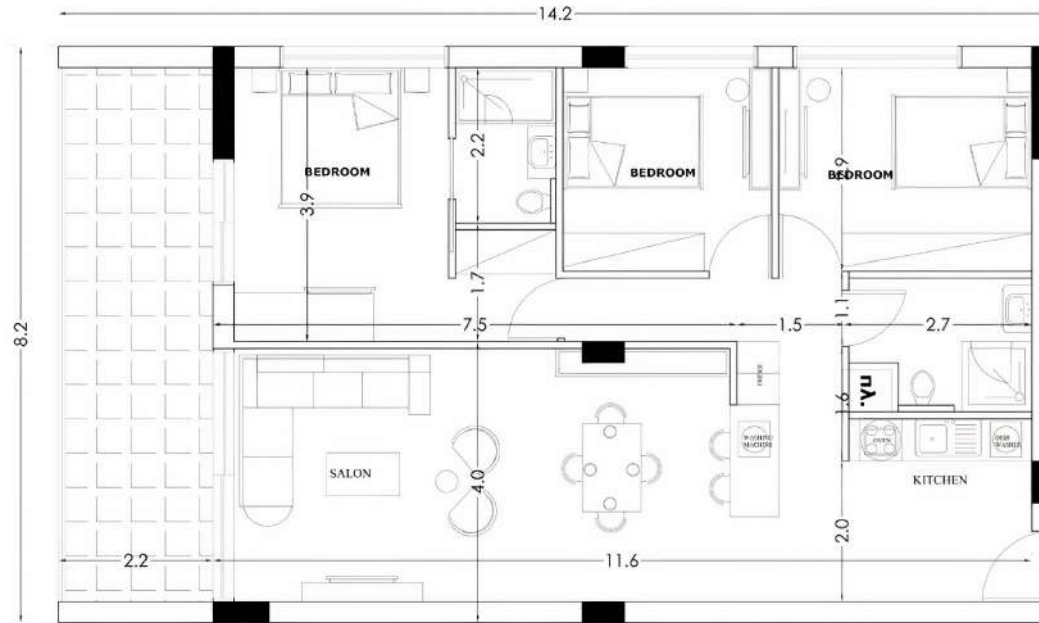
SECOND FLOOR

206 - 98 m²



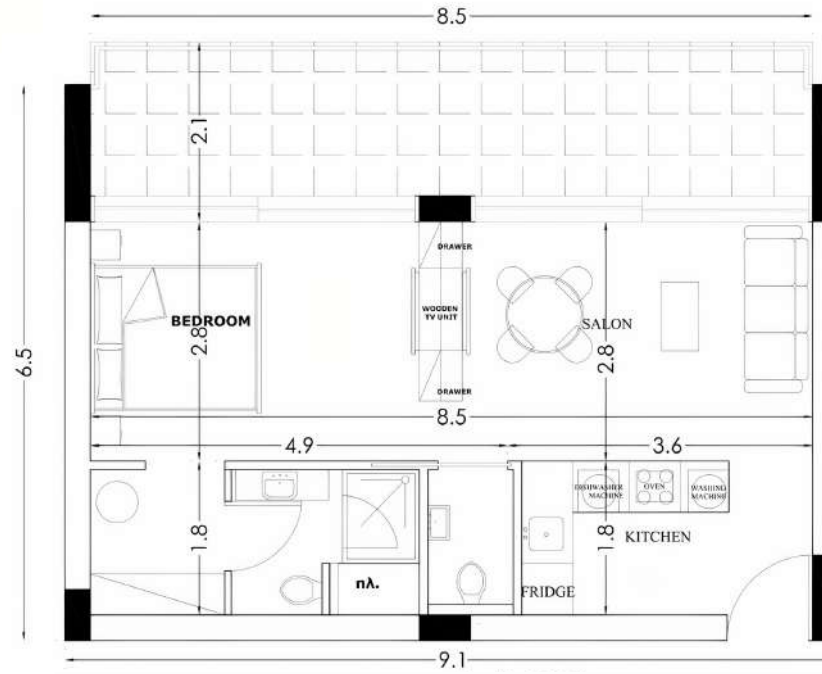
THIRD FLOOR

301 - 120 m²



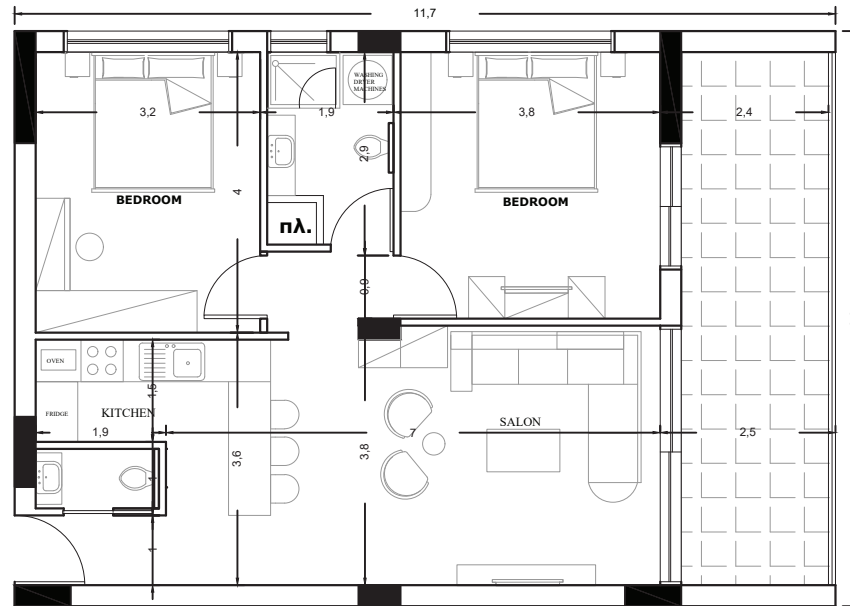
THIRD FLOOR

302 - 63 m²



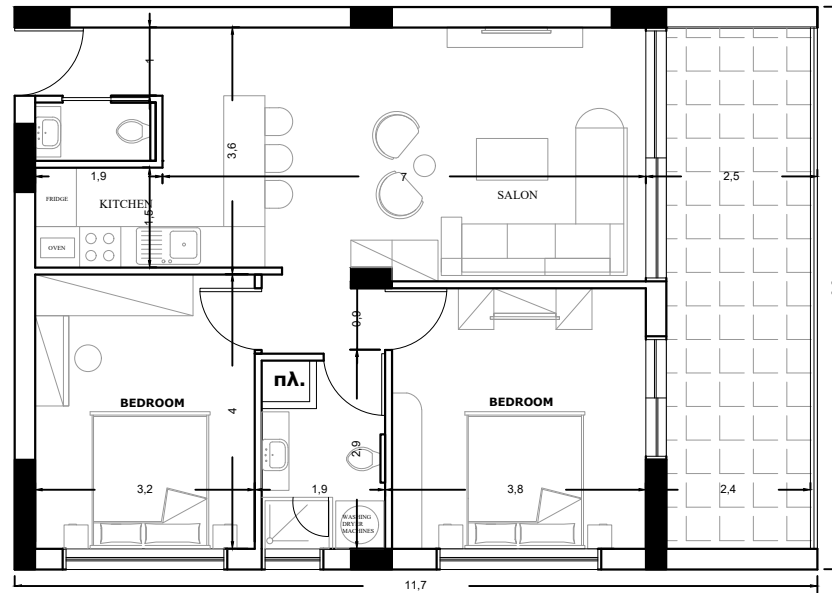
THIRD FLOOR

304 - 98 m²



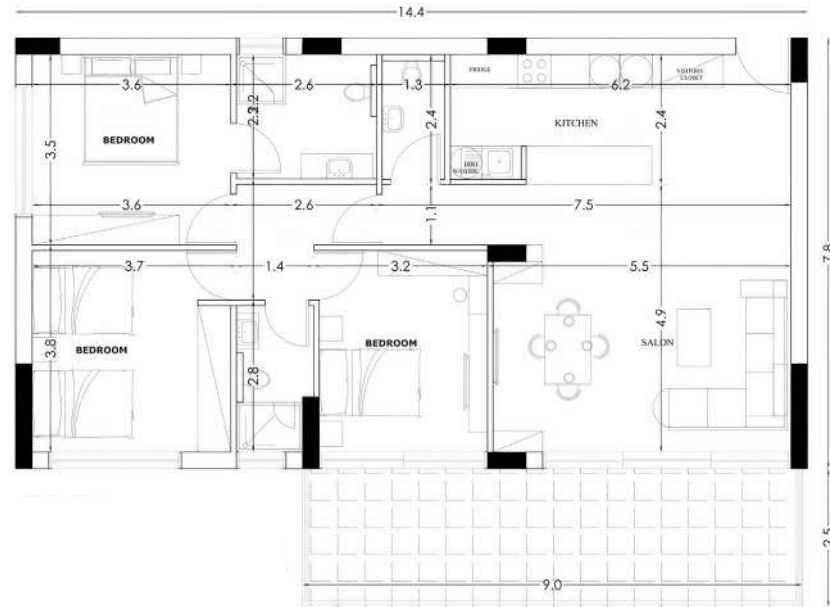
THIRD FLOOR

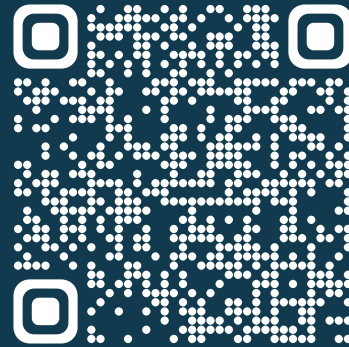
305 - 98 m²



THIRD FLOOR

306 - 98 m²





Project Management



Project Development



Project Contracting

